

Skeet 1 opening and closing

Safety first

Action open at all times unless its your turn to shoot

Keep barrel pointed in a safe direction

Keep your finger off the trigger until ready to shoot

Target loads only # 7.5, 8 or 9 shot; shotshells must be less than 3"

Only load while standing on square

Load no more than 2 shells at a time

Remote is stored in white cabinet in RO room in shooters den





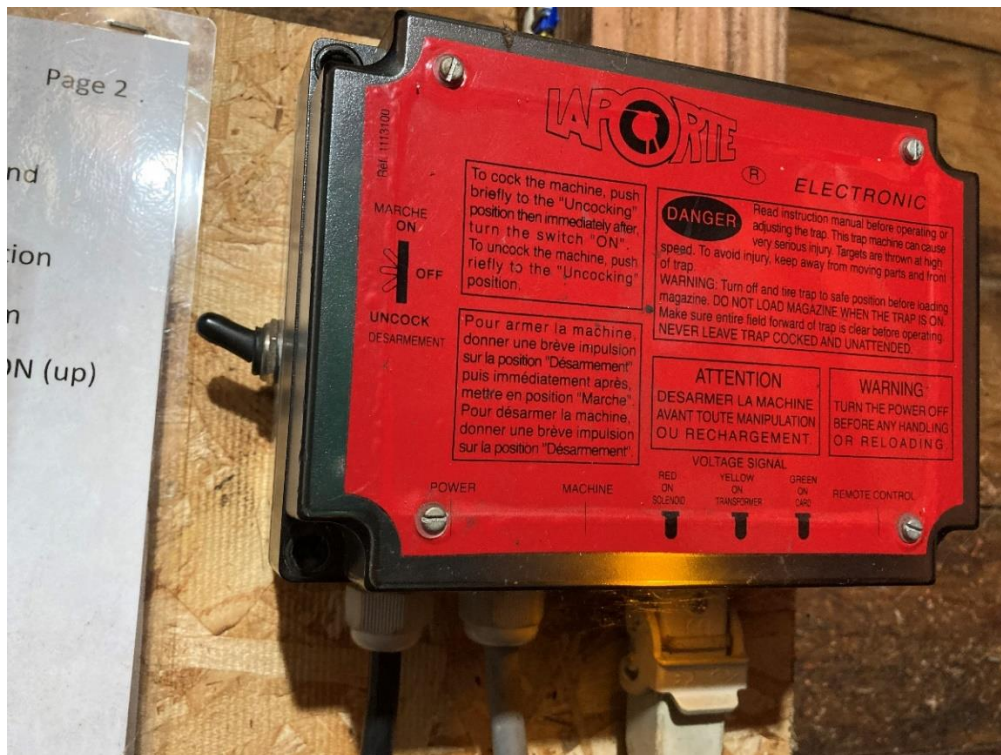


Open window





Turn on light switch and switch on box



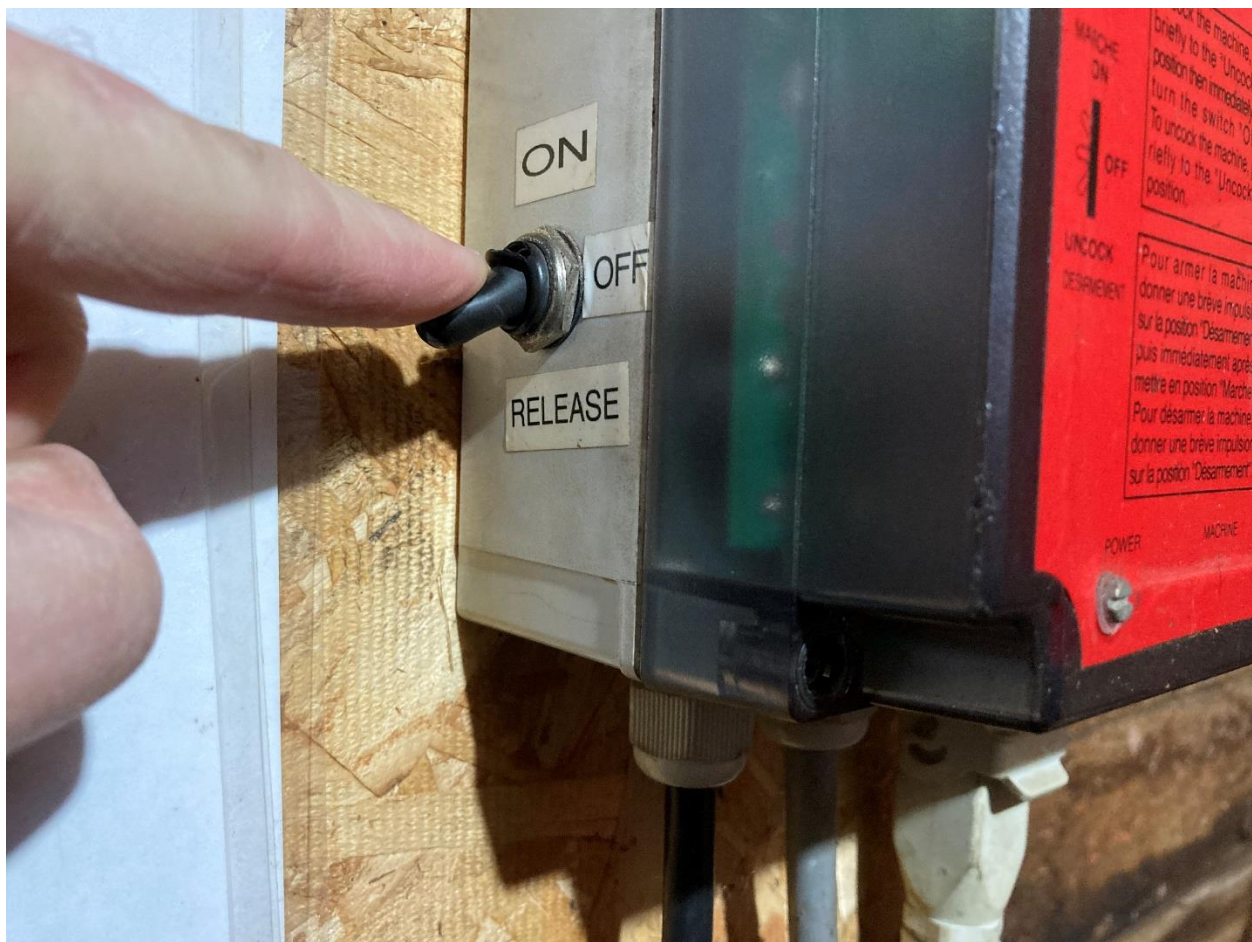
Press button on remote, machine will cock and be ready to fire

Repeat for low house

The skeet field should be ready to use.

When finished using the skeet field:

Push switch on box all the way down to release target and turn off machine



Throwing arm is cocked under machine. **It is NOT safe**



Throwing arm is released. machine is safe



Turn off light switch

Close window

Reload machine with targets

Shut off lights and lock up

Return remote to white cabinet

Sign in and pay \$4 per round \$5 per round per guest

